

ANR Monthly Customer Update

OCTOBER 2022

OCTOBER 19, 2022



Agenda



- 1. Safety moment and TC Energy update**
DeAnna Parsell, Noms & Scheduling
- 2. Storage update**
Eric Tawney, Operations Planning
- 3. Operational update**
Kevin Pham, Operations Planning
- 4. Noms & scheduling update**
DeAnna Parsell, Noms & Scheduling

Safety moment: Halloween safety

- Walk on sidewalks, not in the street
- Look both ways before crossing and cross only at corners
- Plan your route and share it with your family/group
- Carry a flashlight
- Visit homes with the porch light on
- Accept treats at the door and never go into a stranger's house
- Be cautious
- Inspect treats before eating and don't eat candy if the package is open

TC Energy has joined the **PAGE Coalition**

Protecting the climate and increasing energy security by promoting policies that expand the availability of natural gas

*Learn more about the partnership
to address global emissions at:
www.pagecoalition.com*

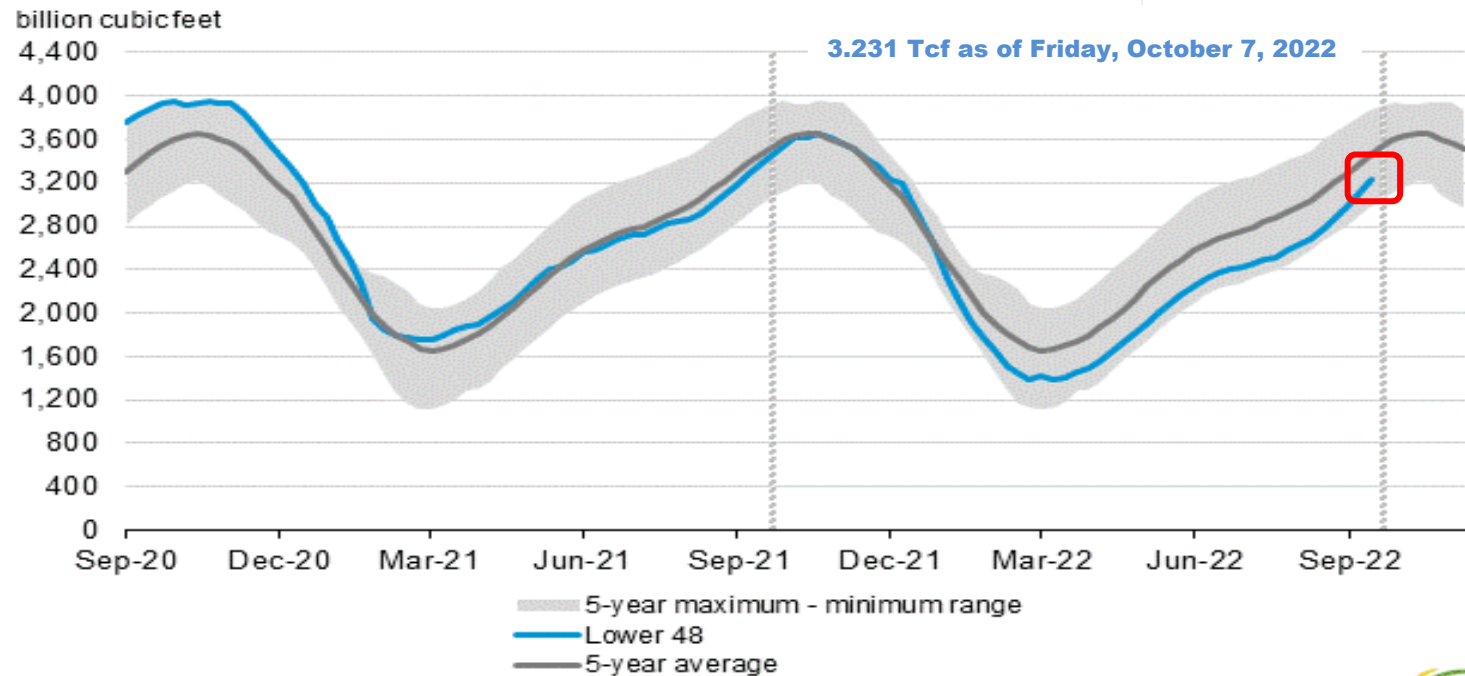


Storage update

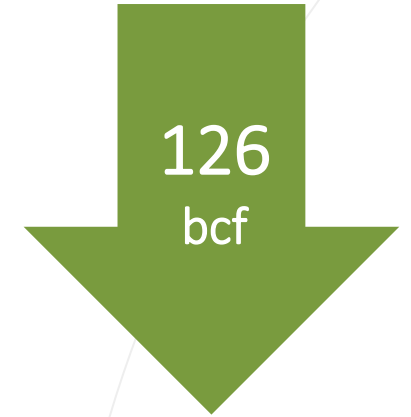
Eric Tawney – Operations Planning

EIA storage position: The big picture

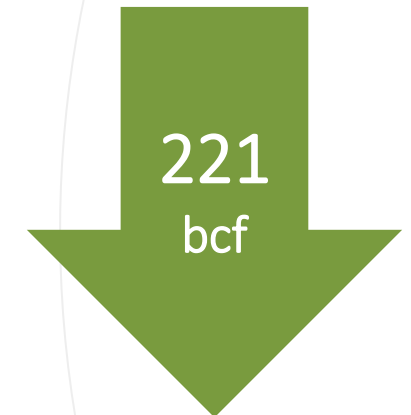
Working gas in underground storage compared with the five-year maximum and minimum



Source: U.S. Energy Information Administration



less than October 2021

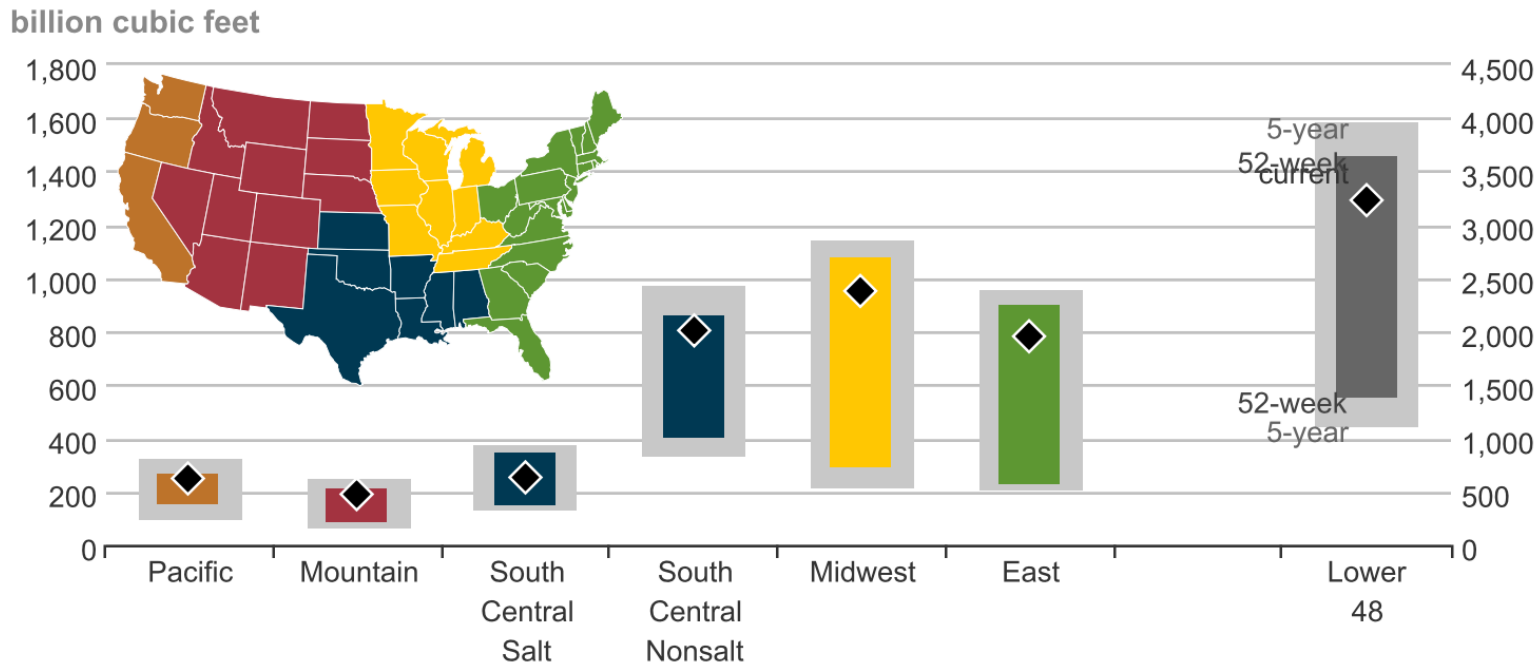


*below the
five-year average*



EIA storage position: The big picture

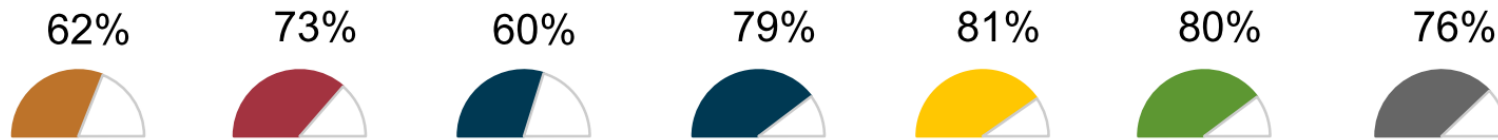
Underground working natural gas storage summary as of October 7, 2022



Lower 48
 current: 3,231
 5-year min: 1,107
 5-year max: 3,958
 52-week min: 1,382
 52-week max: 3,644

Midwest
 current: 952
 5-year min: 211
 5-year max: 1,139
 52-week min: 293
 52-week max: 1,079

Underground storage capacity utilization

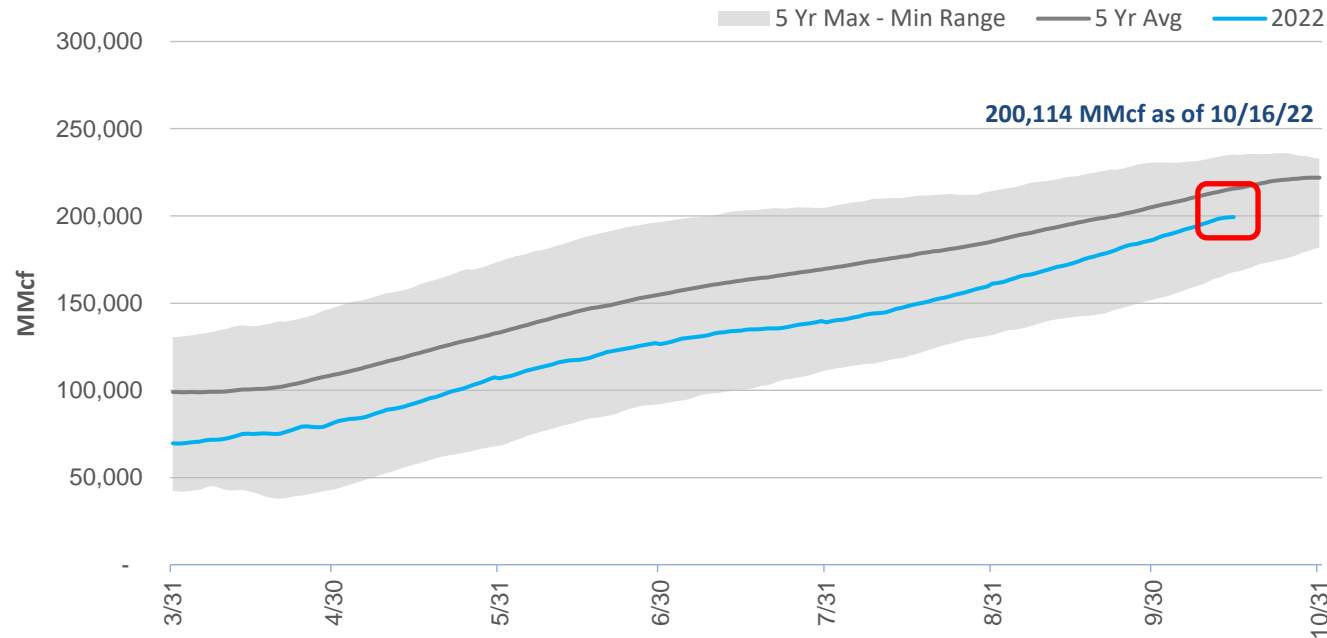


Source: U.S. Energy Information Administration



Storage position

Working gas in underground storage compared with the five-year maximum and minimum



less than October 2021

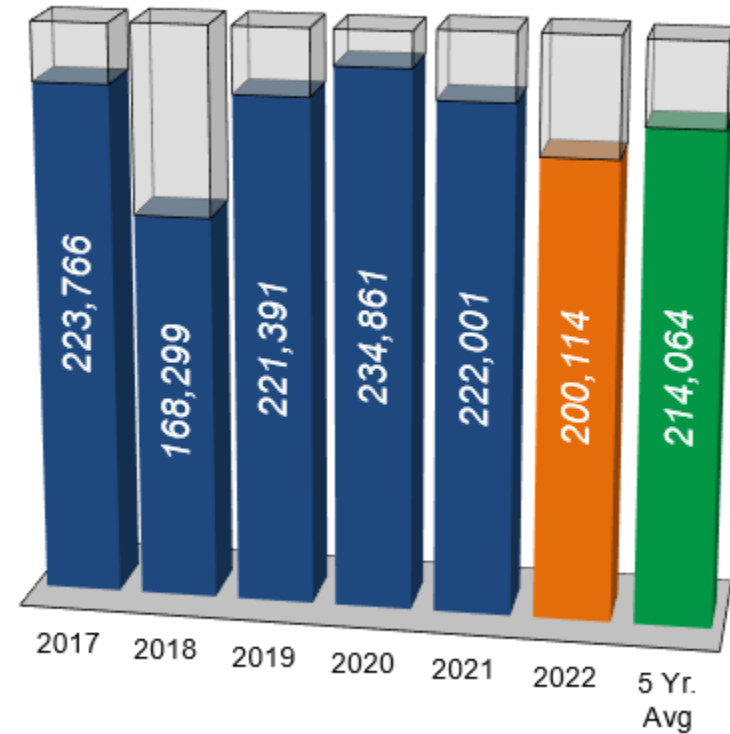


*below the
five-year average*



Storage operations

- From Wednesday, September 21 – Monday, October 17, storage activity averaged an injection rate of 862-MMcf/d. Daily injection rate activity varied from a high of 1.25-Bcf/d to a low of 243-MMcf/d.
- Storage capacity is 81 percent full with less than two weeks left in the injection season.
- ANR has met all firm customer demand for storage activity.
- There are currently no postings restricting storage activity and no planned restrictions on DDS capacity.



**Total Storage is
81% Full**

Storage operations

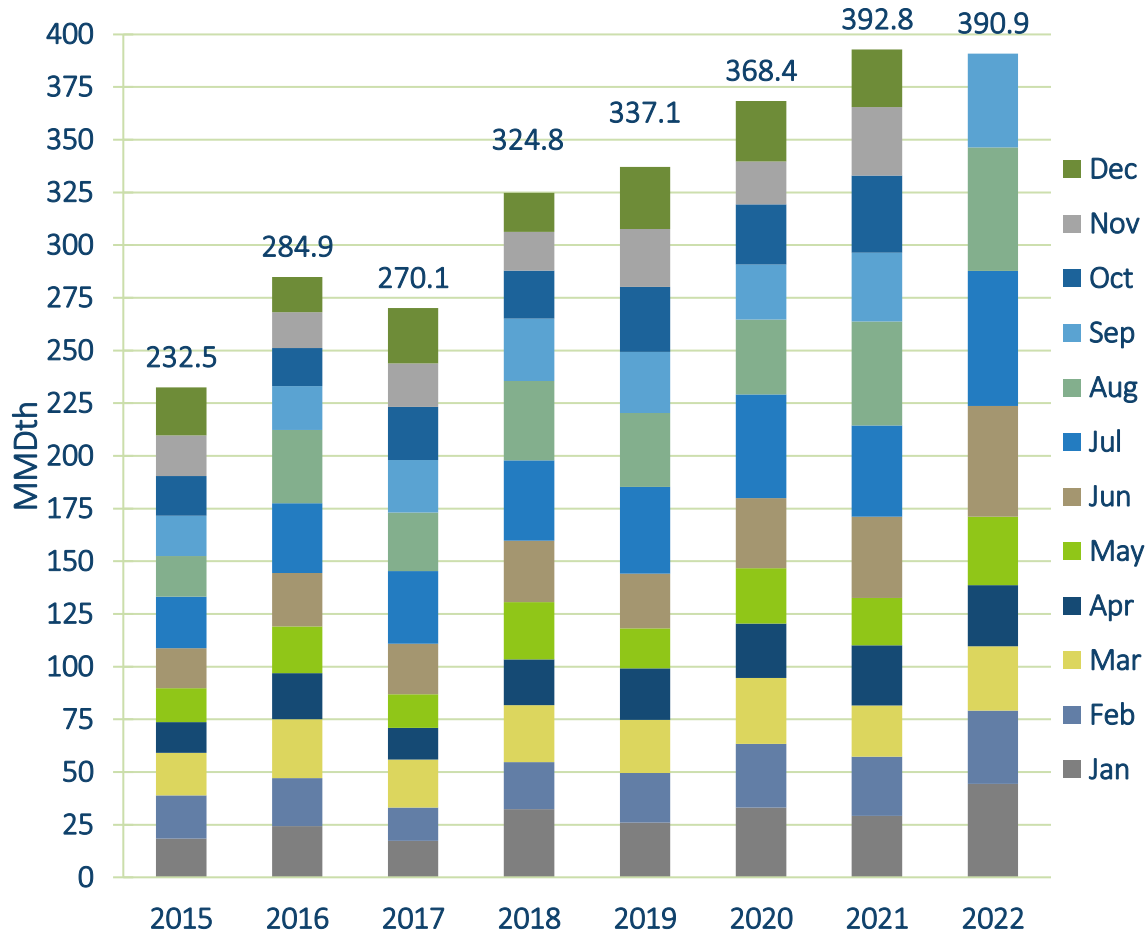
- Storage activity is primarily on injection, but withdrawals are still possible under certain conditions. The possibility of withdrawals will increase as the temperatures decrease and fall approaches.
- ANR has begun its fall storage field shut-ins to set the fields up for withdrawal. ANR will ensure sufficient withdrawal capacity is maintained to meet firm injection demand.
 - When needed, sufficient withdrawal capacity will be available to meet anticipated demand
- The available capacity will continue to be reflected on the EBB under the operationally available capacity

Operational update

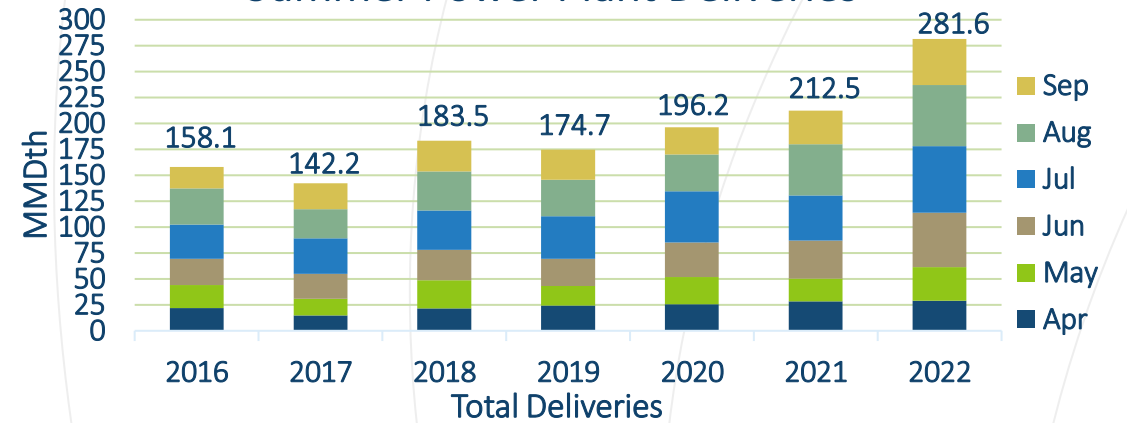
Kevin Pham – Operations Planning

Monthly deliveries to Power Plants

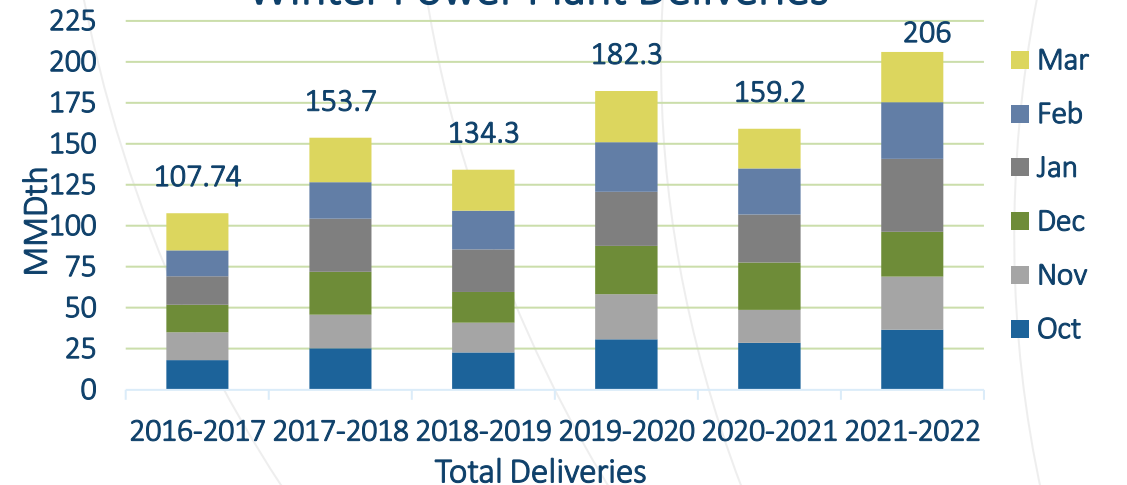
Total Monthly Power Plant Deliveries



Summer Power Plant Deliveries



Winter Power Plant Deliveries



Capacity impacts (SW Mainline & Area)

		Cap (MMcf/d)																																																				
Dates	Area/Segment/Location	Impact	Avail	October														November																																				
Southwest Area & Mainline				19	20	21	22	23	24	25	26	27	28	29	30	31	1	2	3	4	5	6	7	8	9	10	11	12	13	14	15	16	17	18	19	20	21	22	23	24	25	26	27	28	29	30								
Southwest Mainline Northbound (LOC #226630)																																																						
10/10 - 10/22	Integrity Digs MP 599.91	70	620																																																			
10/24 - 10/31	Integrity Digs MP 611.48	70	620																																																			
11/1 - 11/5	Enterprise CS System Test + New Windsor CS Yard Valve Replacement + Integrity Digs MP 611.48	100	590																																																			
11/7 - 11/15	Integrity Digs MP 650.6	70	620																																																			



Capacity impacts (SE area)

		Cap (MMcf/d)		September							October																																														
Dates	Area/Segment/Location	Impact	Avail																																																						
Southeast Area				21	22	23	24	25	26	27	28	29	30	1	2	3	4	5	6	7	8	9	10	11	12	13	14	15	16	17	18	19	20	21	22	23	24	25	26	27	28	29	30	31													
Stingray Int (LOC #135819)																																																									
8/20 - 12/31	Pipeline - Integrity Issue / Hurricane Laura Damage	N/A	Shut In																																																						
Multiple Meters - Cameron Area																																																									
10/20 - 12/31	Meter Station - Hurricane Laura Damage	N/A	Shut In																																																						
Shadyside/TGP Rec (LOC #467239)																																																									
1/6 - 12/31	Meter Equipment Issue	N/A	Shut In																																																						
Shadyside/TGP Del (LOC #467240)																																																									
1/6 - 12/31	Meter Equipment Issue	N/A	Shut In																																																						



Outage postings

- Service impacts are estimates. Actual nominations, markets, weather and pipeline conditions determine any level of curtailments.
- Projects may be added, altered, delayed or cancelled. Emergent work cannot be planned and will happen from time to time.
- Notice of such planned work, including additions or changes, will be provided via a posting under the Planned Service Outage (PSO) category in GEMS. Emergent work will be posted under the Critical Notice category as soon as possible.



Nominations & Scheduling update

DeAnna Parsell – Noms & Scheduling

Extreme Condition Situation Notices – Phased Philosophy

During peak Winter periods, ANR can declare and Extreme Condition Situation when:

- Any portion of ANR's system throughput approaches capacity
- Extreme weather conditions exist
- ANR experiences operating pressures that can be significantly great or less than normal operations, such that ANR's ability to receive or deliver quantities of gas to meet service obligations is impaired.

**Note that these phases are generally applied and are subject to change based on operating conditions in order to ensure system integrity*

Extreme Condition – Winter Phases 1 and 2

Phase 1: Post a weather advisory indicating colder weather is forecasted and shippers should align receipts and deliveries to minimize imbalances to support system integrity.

- Guidance for notice is forecast for Green Bay, Madison or Milwaukee, Wisconsin where high temperatures are less than 20° F for two or more consecutive days.

Phase 2: Post Declaration of Extreme Condition Situation indicating the Area(s) of ANR's system that are affected, typically ANR's Northern Market Area (ML7)

Guidance for notice is forecast for Green Bay, Madison or Milwaukee, Wisconsin where average temperatures are less than 15° F for two or more consecutive days or other operational conditions exist.

Actions and Impacts associated with Phase 2 Notices could include some or all the following:

- Reduced Swing Tolerance from 10% to 5%
- Indicate services that are required to be on uniform hourly takes over a 24-hour period
- Indicate services that are required to be at their contractual hourly rate
- Indicate ITS-3 will be approved on a best-efforts basis and will flow based on the approved nominated hourly rate
- Deny incremental ITS-3 nominations
- Indicate limitation or denial of operational flexibility
- Indicate ETS & FTS-3 secondary nominations will flow on a uniform hourly basis
- Limitation of interruptible & overrun transportation services including MBS
- Unauthorized Overrun will not be permitted.

Extreme Condition – Winter Phases 3 and 4

Phase 3: Post Declaration of Extreme Condition Situation indicating the Area(s) of ANR's system that are affected.

- Guidance for notice is forecast for Green Bay, Madison or Milwaukee, Wisconsin where average temperatures are less than 10° F, Nominations exceed 90% of the Wisconsin Contracted Capacity or other operational conditions exist.

Actions and Impacts associated with Phase 3 Notices could include items from Phase 2 and some or all of the following:

- No interruptible, overrun or MBS withdrawal services in the area affected by the notice
- Firm secondary services will be scheduled up to the posted operational capacity in the area affected by the notice
- Certain flow-throughs, locations or geographic regions may be limited to firm primary only

Phase 4: Issuance of an OFO – Operational Flow Order.

- OFO Notices driven by system integrity requirements or determination of unacceptable shipper(s) behavior
- Actions and impacts to be specified in the OFO

Coming Soon!

- TC eConnects – ANR Storage Company, Eaton Rapids and Blue Lake Gas Storage
- Security update – Multi-factor Authentication
- ANR Monthly Customer Update – Transition to Microsoft Teams!

ANR customer assistance

Please contact the ANR Noms & Scheduling team for customer assistance, including:

- Scheduling priorities
- Firm service rights and features
- GEMS new user training
- Virtual and face-to-face meetings



TOLL FREE

1-800-827-5267



GROUP EMAIL

[ANR Noms Scheduling
@tcenergy.com](mailto:ANR_Noms_Scheduling@tcenergy.com)



WEBSITE FOR THE ANRPL
TARIFF

ebb.anrpl.com

Questions



US\$ 0.8	0.2
US\$ 0.7	0.3
US\$ 0.6	0.4
US\$ 0.5	0.5
US\$ 0.4	0.6
US\$ 0.3	0.7
US\$ 0.2	0.8
US\$ 0.1	0.9
US\$ 0.0	1.0
Total Expenditure	
US\$ 0.0	1.0